

# StudioMP3 User Manual



## **Overview**

The StudioMP3 player is a standalone interface that streams audio to the Procaster from MP3 files stored on a standard flash drive. Using your PC, simply drag and drop files onto the flash drive.

It has 3 modes of operation, selected by a switch on the rear of the unit:

1. Sequential - Play MP3 files one after another and repeats sequence over forever.
2. Shuffle - Play MP3 files randomly forever.
3. Line - Feed line audio from an external audio source.

# StudioMP3 User Manual

## Layout



Fig. 1 – StudioMP3 front view

1. **Headphone** stereo monitor output (fixed volume)
2. **Status LED**: red = initializing, green = ready, flashing green = playing
3. **Flash drive** plugs in here



Fig. 2 – StudioMP3 rear view

# StudioMP3 User Manual

4. **Reset** – press after selecting desired operating mode
5. **Line in** – stereo input from external audio source, e.g. mixer
6. **600 ohm level** – adjusts volume from external audio source on **Line in**. (L and R audio from **Line in** is mixed to a mono 600 ohm balanced signal suitable for the Procaster)
7. **Line out** – stereo output from flash drive or looped from **Line in** when 'Line' mode is selected
8. Power for Procaster: **PWR+** = +12VDC, **PWR-** = 0V
9. Audio for Procaster: **AUD-**, **AUD+** (600 ohm)
10. **Cable anchor**
11. **Mode select switch**
12. **AC adaptor** connector (12VDC power from AC adaptor or other 12VDC source connects here. Center is positive.

## ***Installation and Operation***

### **Step 1. Install Procaster**

See Procaster User Manual.

### **Step 2. Install StudioMP3**

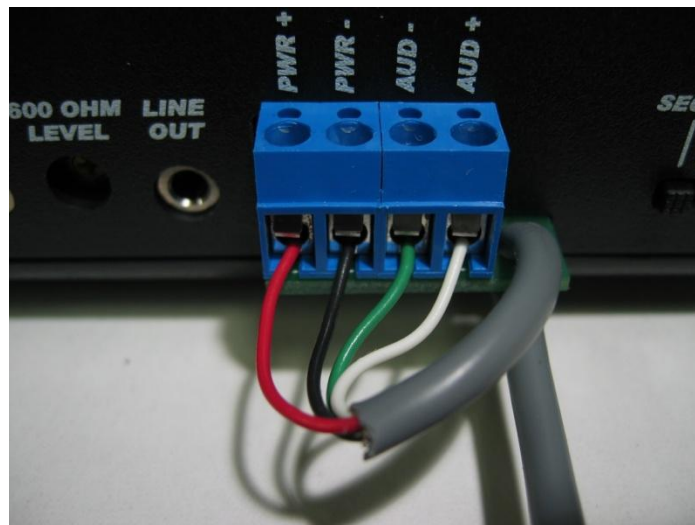


Fig. 3 – Connection to Procaster

# StudioMP3 User Manual

Loop the cable through the anchor point and bend back in a sharp 'U' as in Fig. 3. Connect the wires as follows:

- Red: PWR+
- Black: PWR-
- Green: AUD-
- White: AUD-

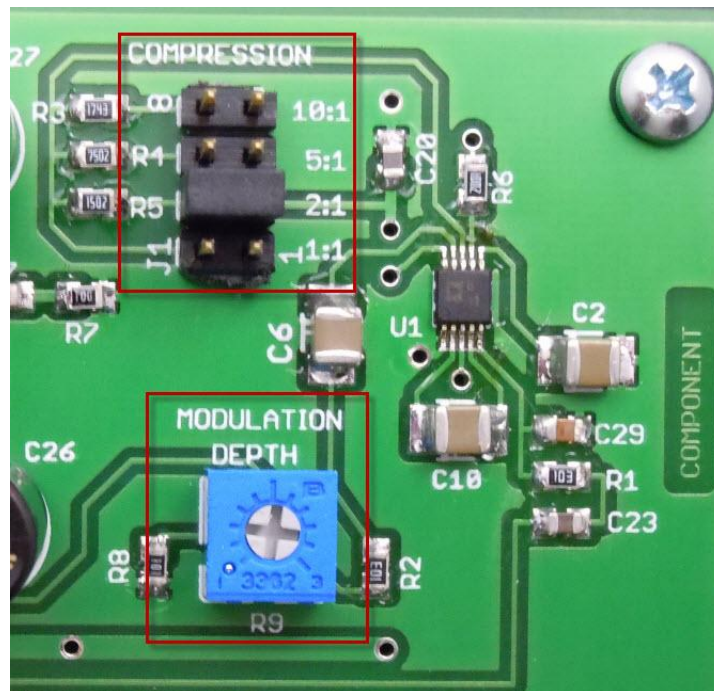
**Note: cut off the shield wire (it is not used at this end). The shield wire is only connected at the Procaster end (see Procaster User Manual).**

### Step 3. Change compression and modulation depth (if required)

If you need to change the settings of the audio processor, remove the 4 black screws on the underside of the unit, lift off the top cover to expose the circuit board. Make sure power is removed before proceeding.

To change the compression, move the jumper J1 to select between 1:1, 2:1, 5:1 and 10:1. Default value is 2:1.

To alter modulation depth, adjust control R9 clockwise to increase. Adjust according to personal preference.



# StudioMP3 User Manual

## **Step 4. Add MP3 files to Flash Drive**

First format your flash drive to make sure it is completely clear of any resident programs that flash drive manufacturers may have added. Then, using your PC, load MP3 files onto the flash drive.

**Note: Only use MP3 files – other types will prevent the player from working.**

## **Step 5. Select Mode**

Choose one of 3 operating modes:

1. **Sequential** - Play MP3 files one after another and repeat sequence over forever.
2. **Shuffle** - Play MP3 files randomly forever.
3. **Line** - Feed line audio from an external audio source.

Note: press **Reset** after selecting desired operating mode.

## **Step 6. Power Up**

Connect AC adaptor.

Note: When powered up, there may be partial playback of MP3 files when the slide switch is moved from one mode to another until the unit settles down – this is normal.

Because flash drives differ, if the flash drive is removed and re-inserted, you may need to reset the StudioMP3 by pressing the rear reset button or if still not running, cycle the power off and on by unplugging the AC adaptor either at the wall end or at the rear of the unit. This ensures that the MP3 player is properly initialized.

## **StudioMP3 contents**

- StudioMP3 main unit
- AC adaptor
- Flash drive
- These instructions